

CONTRIBUTORS



Vanessa Couzens is a DIA-accredited interior designer with qualifications in architecture and more than 15 years of experience working in architecture and interior design practices in Australia and the UK. Five years ago, she discovered a passion for teaching and became a full-time educator in interior design and decoration. For the past four years, she has served on the committee of the not-for-profit educational organisation, the Australian Architecture Association, acted as volunteer architectural tour guide for the past nine years and served as the editor and writer for the Australian Architecture Association's monthly e-publication, *All About Architecture*. This issue, Vanessa shares her opinion with us on page 52.



Massimo Speroni is the head designer of Melbourne-based interior design firm, Massimo Interiors. Growing up in Milan, Italy, Massimo has a natural sense for innovative design concepts and elegant finishes that bring personality and completion to any home. His creative drive is obsessive; he is sensitive to the world around him and makes it his job to stay on top of current trends, yet bravely follows his instincts. Massimo's passion is to help clients transform their homes and workplaces, sharing his knowledge on how to create bespoke and exciting spaces. In this issue, Massimo visited the annual Milan Furniture Fair for *Home Design* and gives us his insights on page 171.



Sue Murray has been working in the arts as a professional photographer, lecturer and artist for more than 30 years. After starting out as a documentary photographer and winning a *Time* magazine award in 1985, she developed a lifelong passion for photographing architecture. Sue has worked as a commercial photographer for interior designers, architects and resorts, and has been exhibiting since the mid-90s in group and solo exhibitions. In this issue, she captures Manolev Associates' stunning property in Gladesville, Sydney on page 88.

home DESIGN

Editor-in-Chief Kate St James, FDIA

Deputy Editor Annabelle Cloros

Senior Features Writer April Ossington

Editorial Assistant Holly Cunneen

Intern Vina Purwantoro

Sub-Editor Michelle Segal

Contributors James Cleland, Vanessa Couzens, Linda Delaney, Fiona Michelon, Sarah-Louise Radhanath, Massimo Speroni, Danielle Townsend

Photographers & Stylists Marian Riabic,

Andrew Lecky, Sue Murray, Tim Turner,

Tim Bauer, Sabrina Trelying

Art Director Kate Podger

Publisher Janice Williams

ADVERTISING

All Agency Enquiries and Bookings
National Advertising Manager:

Julie Jackson, (02) 9887 0333, 0411 424 072,
jjackson@universalmagazines.com.au

SALES MANAGERS

NSW: Stephen Key, 0457 102 888,
skey@universalmagazines.com.au

Vic: Lachlan Rainey,
lrailey@universalmagazines.com.au

Qld: Amy Frank, 0488 424 232,
afrank@universalmagazines.com.au

SA: Sandy Shaw, 0418 806 696,
sandyshaw@internode.net.au

Sales Director, Home Publications

Joseph Sing, (02) 9887 0355,
jsing@universalmagazines.com.au

Editorial Enquiries

homedesign@universalmagazines.com.au
Circulation Enquiries Sydney head office
(02) 9805 0399



Chairman/CEO Prema Perera

Publisher Janice Williams

Chief Financial Officer Vicky Mahadeva

Associate Publisher Karen Day

Circulation Director Mark Darton

Creative Director Kate Podger

Editorial & Production Manager Anastasia Casey

Production Executive Nerilee Chen

Prepress Manager Ivan Fitz-Gerald

Marketing & Acquisitions Manager
Chelsea Peters

STRATEGIC PARTNERS

Australian Architecture Association
Green Interior Awards

Home Design Vol. 18 No. 4 is published by Universal Magazines, Unit 5, 6-8 Byfield Street, North Ryde NSW 2113. Phone: 02 9805 0399, Fax: 02 9805 0714. Melbourne office, Level 1, 150 Albert Street, South Melbourne Vic 3205 Phone: 03 9694 6444, Fax: 03 9699 7890. Printed by Toppan Leefung, China, distributed by Network Services, 175-183 Castlereagh Street, Sydney. Distributed in Singapore and Malaysia by CARKIT (FE) Pte Ltd, Singapore, Phone: 65 62821 960. This book is copyright. Apart from any fair dealing for the purpose of private study, research, criticism or review as permitted under the Copyright Act, no part may be reproduced by any process without written permission. Enquiries should be addressed to the publishers.

The publishers believe all the information supplied in this book to be correct at the time of printing. They are not, however, in a position to make a guarantee to this effect and accept no liability in the event of any information proving inaccurate. Prices, addresses and phone numbers were, after investigation, and to the best of our knowledge and belief, up to date at the time of printing, but the shifting sands of time may change them in some cases. It is not possible for the publishers to ensure that advertisements which appear in this publication comply with the *Trade Practices Act, 1974*.

The responsibility must therefore be on the person, company or advertising agency submitting the advertisements for publication. While every endeavour has been made to ensure complete accuracy, the publishers cannot be held responsible for any errors or omissions.

*Recommended retail price.

ISSN 1327-3930 Copyright © Universal Magazines MMXV
ACN 003 026 944

www.universalmagazines.com.au

Please pass on or recycle this magazine.

We are a member of

PublishersAustralia
media that engages

2015 DESIGN TRENDS

Report Massimo Speroni Photography Massimo Interiors

The Salone Internazionale del Mobile (iSaloni), held every April, remains the world's most important design fair. It leads the way in furniture design both from Italy and abroad, showcasing the upcoming design trends that will soon be shaping interiors across the globe

This year, I was honoured to be part of this extraordinary event. Based in my own hometown of Milano, Italy, the Salone spread across an exhibiting area of more than 200,000m², with more than 2000 exhibitors. This year, the Salone also offered new productions and proposals regarding lighting at Euroluce. At iSaloni, the highlights that stood out for me were muted pastels and punches of colours, plush velvet fabrics as well as textures and shapes inspired by nature. My favourites were metal and glass combinations, the use of marble and natural timber, geometric designs and 3D patterns. There was also a strong use of quilted detailing on sofas and other furniture pieces.



ABOVE Elle flexible modular sofa by Softline **BACKGROUND** Ring mirror by Boca do Lobo

MIXED METALS

Brass and gold were definitely the heroes in all types of applications from polished to satin. They channel a more sophisticated kind of glamour that is not too overwhelming. Although they have been on-trend for the past year or two, they have now become a must-have in every home. A designer favourite this year is warmer and softer shades of rose gold and copper. With regard to lighting trends, Euroluce also displayed an abundance of brass, copper and rose gold applied to new designs and on existing vintage designs, adding a more contemporary spin. Alongside this metal mania, another common element present among furniture pieces this year was the stylish and voluptuous reference to 1940s-inspired designs from curved sofas to petite armchairs. It's all about regenerating some of the old classics.



BELOW benben suspension light by Jacco Maris
BOTTOM RIGHT Display by Covet Lounge



ABOVE Hoops pendant by Axo Lighting
FAR LEFT Monocles cabinet by Delightfull
LEFT Fedora pendants by Axo Lighting
BELOW Copycat lamp by Flos



GEOMETRIC LINES

Visual impact is definitely the key theme in 2015. As we have already seen, metals, geometric shapes and strong patterns play their part in this year's look. Concurrently, monochrome decorative designs applied onto furniture pieces have given a fresh and modern makeover to the ultimate power combo of black and white. More playful shapes popped up at iSaloni without any boundaries to their use — from quirky bookcases and 3D lamps to armchairs, recessed lighting and even dinnerware. Additionally, all these details can elevate a space from ordinary to elegant or from commonplace to unforgettable!



LEFT The Running Magnet by Flos
ABOVE Tudor cabinet by Emmemobili



FAR LEFT Arlequin cabinet and Stripes Boiserie wall panelling by Emmemobili
LEFT Origami lamp by Pouenat
ABOVE Matisse armchair by Oasis
BELOW Jellies Family by Kartell



REFLECTION ON MILAN



ABOVE Madama armchair by Fratelli Boffi

FAR RIGHT 16 floor lamp by Bocci

RIGHT Cloud chair by Kartell

BELOW Koi freestanding washbasin by Maison Valentina

BOTTOM RIGHT Eden centre table by Boca do Lobo



NATURE-INSPIRED

Bring the outside in! References derived from natural elements whether animals, fossils, leaves and/or tree branches alongside organic shapes and textures represent an eco-friendly and contemporary feeling. The use of stone, timber, metal and glass is currently a huge movement in the modern interior design world, hence raw-looking timbers — natural or petrified — were very prominent at iSaloni for side and coffee tables. Accent chairs and stools made a statement in white and other unusual colours, bringing some character and a vintage spin to otherwise dreary pieces. Faux furs and real furs were used for throws and upholstery applications. More rounded and graceful shapes are setting the trend, and an appreciation of authentic materials is paramount among designers and rapidly increasing among consumers.

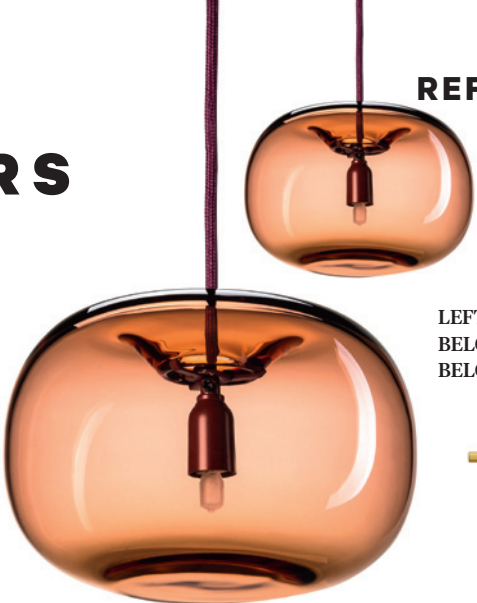


LEADING COLOURS

Pantone's 2015 Color of the Year, Marsala — a mix between a dark brown and an elegant red — was definitely making its mark this year. It appeared on furniture, upholstery, rugs and even paint, turning walls from drab to fab. Due to its burnt undertones, the sultry Marsala is highly compatible with amber, golden yellows, green and blues. In addition, soft pink colours and teal and turquoise were very strong paired with neutrals such as smoky shades of grey as were metal hues alongside the caramel-coloured leathers and a pop of citrus and bright orange. Clear glass seemed a thing of the past while smoky glass was very popular; it is refined, adding a sense of mystery and intrigue and exuding both masculinity and femininity.



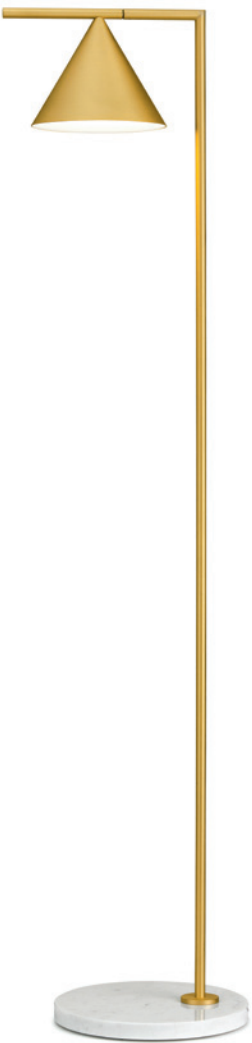
REFLECTION ON MILAN



LEFT Pebble pendant by Örsjö

BELOW LEFT Display by Biba Salotti

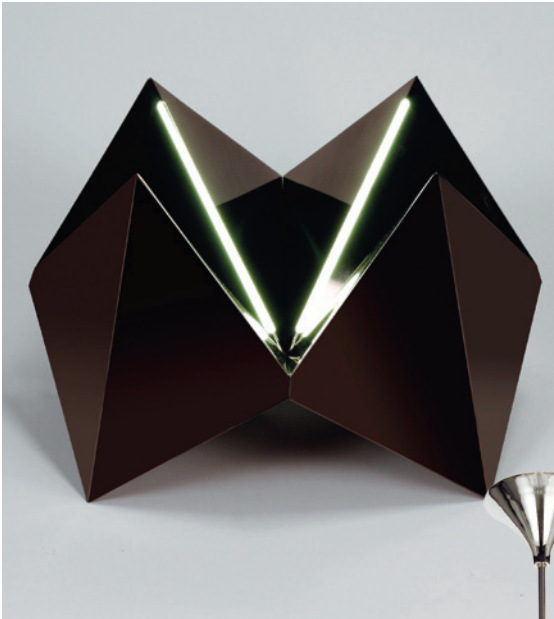
BELOW Captain Flint floor lamp by Flos



ABOVE Halo sofa by Softline LEFT Madame Pucci (NY-Rome) by Kartell

LED
SECRETS

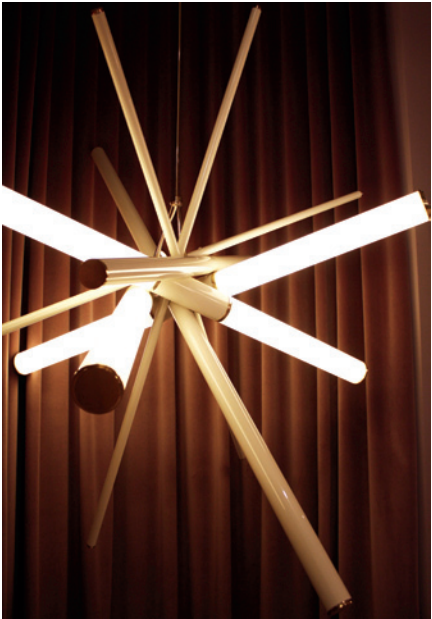
As technology constantly improves and our demands increase, LEDs have become thinner, brighter and smarter looking. At Euroluce, the implementation of LED lights was clearly leading the world of lighting design this year. Across the many lights exhibited, LEDs were cleverly disguised within lighting structures in order to create subtle reflections and mood lighting. The creative approach that illuminated sculptural pieces was very eye-catching. Moreover, the abundance of glass, metal–glass and natural timber combinations were used across pendants and chandeliers, while the use of fabric shades and the like were minimal.



TOP Stream, Iridescent Light by Terzani
ABOVE Sirius lamp by Pounat
BELOW Jardin Colibri chandelier by La Murrina



ABOVE Chromosome lamp by Veronese
ABOVE RIGHT Mini Farrago Pendant 01 by Roll & Hill
BOTTOM RIGHT Freedom Super Wall Lamp by Davide Medri



LEFT Heritage cabinet detail by Longhi
ABOVE Cushions by Vittoria Frigerio
CENTRE Vinicius stool by Delightfull
BELOW Hoffman sofa detail by Longhi

LUXE DETAILS

Yes, 2015 is all about detailing! The refined rhombus quilted finishing on fabrics and soft nubuck leathers was spotted everywhere, presenting an undeniable elegance and luxurious appearance on all types of furniture from sofas to armchairs, bed heads, wardrobe doors and also desks. This is a beautiful, chic effect applied to entire pieces of furniture or used as an accent or trim. An extensive use of velvet and leather–velvet combination on sofas and chairs was also very popular. The more common black and white marbles were accompanied by luxe-coloured marbles, especially the old-time favourite Dark Emperador brown marble. This was unmistakably popular with tables and buffets. Another widespread detail was brass applied to furniture pieces in the form of trims or exquisite accents.



ABOVE Bed by Biba Bed
LEFT Gueridon buffet detail by Longhi

RECLAIMED TIMBER

Nothing beats the authentic rich tones natural timber can offer. Although reclaimed timber has been around for a while, at iSaloni, there was a big splash of reclaimed and natural-looking timber used for modern and contemporary furniture. Transitional pieces are morphing from traditional to modern, and sleek creations and cutting-edge laser-cut designs are becoming pieces of art. Reclaimed timber not only looks good, but it is completely safe, chemical-free, green and environmentally friendly. If you are a big supporter of sustainability and building green, this trend can be the answer you've been waiting for. **HD**

TOP RIGHT Evolution cabinet by Emmemobili

RIGHT Palermo dining table by Emmemobili

BOTTOM RIGHT Angelina chair by Emmemobili

BELOW Good Vibrations cabinet by Fratelli Boffi

